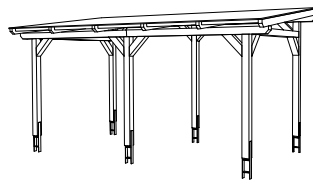
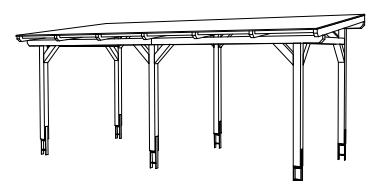


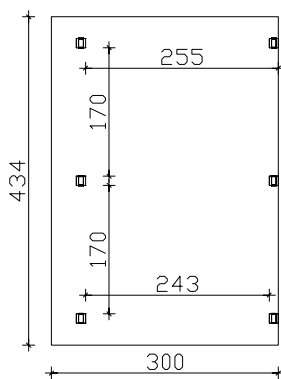
4018211 201518



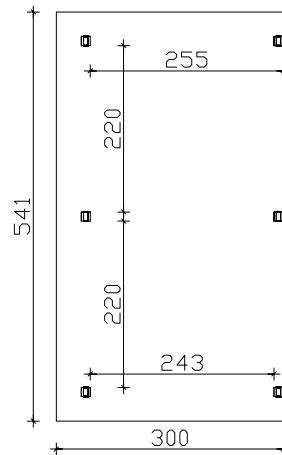
4018211 201594



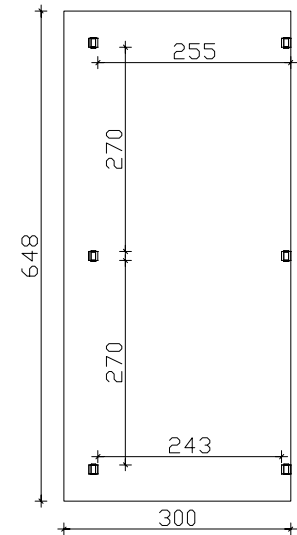
4018211 201679



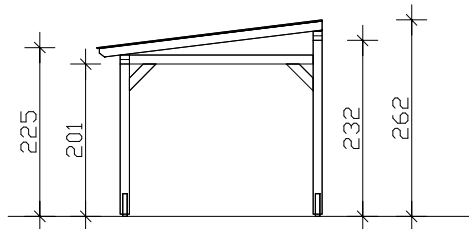
Plan au sol



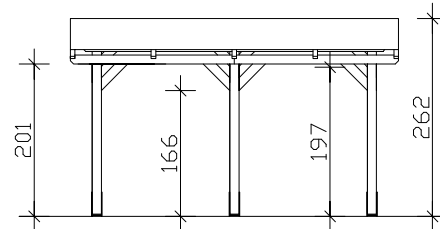
Plan au sol



Plan au sol



Vue de côté



Vue de face

M 1:100

"Siena" Tonnelle autoportante 434cm / 541cm / 648cm x 300cm

Fiche technique / description de la construction

Type de bois / pièces en fer	bois lamellé collé, non traité / galvanisé
Poteaux	3 éléments 12x12x198cm / 3 éléments 12x12x229cm
Couverture	plaques à âme double 16mm (transparent)
Surcharge de neige	sk = 1,80kN/m ²
Largeur x Profondeur	434cm / 541cm / 648cm x 300cm
Hauteur / Passage	225-262cm / 201cm (y compris distance par rapport= 3cm)
Surface (espace bâti)	13,02m ² (31,70m ³) / 16,23m ² (39,52m ³) / 19,44m ² (47,34m ³)
Pente	7°
Conditionnement	LaxLoxH 110x317-330x50-57cm / poids 395/435/475kg
Y compris	Matériels de montage, Ancres, Bandeaux, Instructions de montage (sans béton)