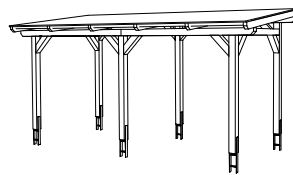
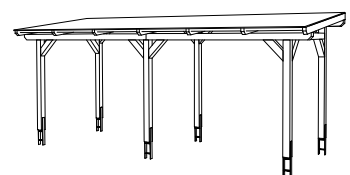


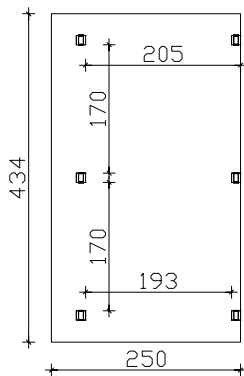
4018211 201495



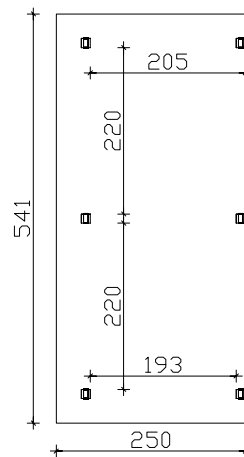
4018211 201570



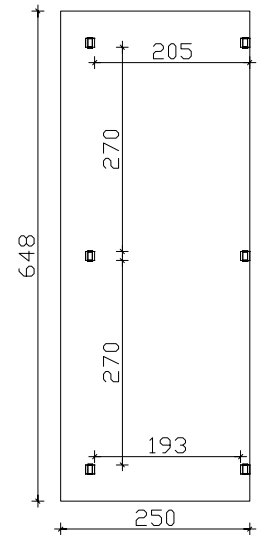
4018211 201655



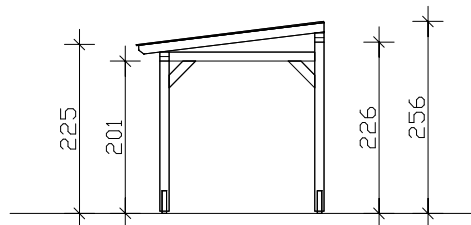
Plan au sol



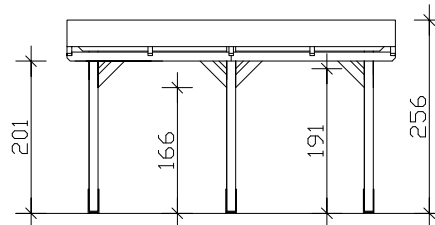
Plan au sol



Plan au sol



Vue de côté



Vue de face

M 1:100

"Siena" Tonnelle autoportante 434cm / 541cm / 648cm x 250cm

Fiche technique / description de la construction

Type de bois / pièces en fer	bois lamellé collé, non traité / galvanisé
Poteaux	3 éléments 12x12x198cm / 3 éléments 12x12x223cm
Couverture	plaques à âme double 16mm (transparent)
Surcharge de neige	sk = 2,00kN/m ²
Largeur x Profondeur	434cm / 541cm / 648cm x 250cm
Hauteur / Passage	225-256cm / 201cm (y compris distance par rapport= 3cm)
Surface (espace bâti)	10,85m ² (26,09m ³) / 13,53m ² (32,54m ³) / 16,20m ² (38,96m ³)
Pente	7°
Conditionnement	LaxLoxH 110x266-340x52-57cm / poids 370/405/440kg
Y compris	Matériels de montage, Ancres, Bandeaux Instructions de montage (sans béton)